



Flora of Australia

Nepenthes L.

Author: T.D. Stanley

Cite this profile as: T.D. Stanley (2020) *Nepenthes*. In: Flora of Australia. Australian Biological Resources Study, Department of Agriculture, Water and the Environment, Canberra.
<https://profiles.ala.org.au/opus/foa/profile/Nepenthes> [Date Accessed: 22 June 2020]

Generated on Mon Jun 22, 2020

Copyright

© Copyright Commonwealth of Australia, 2019

The material in this profile is protected by copyright laws and may be used as permitted under the Copyright Act 1968 or in accordance with licences granted by the copyright owner.

Your right to use images and maps or to permit others to use these is subject to the terms of the licence that the contributor of them has applied to the image or map. Information on copyright in images is set out in the Acknowledgements section and through the ALA site at <http://www.ala.org.au/faq/using-images-found-on-the-ala/>. Text used in this profile has been contributed by the editors and others identified. Unless permitted by the copyright owner, you may download or print a single copy of this material for your own information, research or study.

You may not remove any copyright or other notices appearing in this profile.

No rights are granted to the Commonwealth Coat of Arms or to any logos or trade marks.

Please contact ALA at support@ala.org.au if you believe material in this profile infringes any rights or breaches any contract or licence obligations.

License

All material CC-BY unless otherwise stated.

ISSN: 22077820

Profile Updated: Thu Apr 16, 2020 1:21 PM +10:00

Version: 1

Cite this profile as: T.D. Stanley (2020) *Nepenthes*. In: Flora of Australia. Australian Biological Resources Study, Department of Agriculture, Water and the Environment, Canberra.

<https://profiles.ala.org.au/opus/foa/profile/Nepenthes> [Date Accessed: 22 June 2020]

Profile permalink:

<https://profiles.ala.org.au/opus/foa/profile/20455373-64e7-40f6-822d-e8b3845a0d2a>



***Nepenthes* L.**

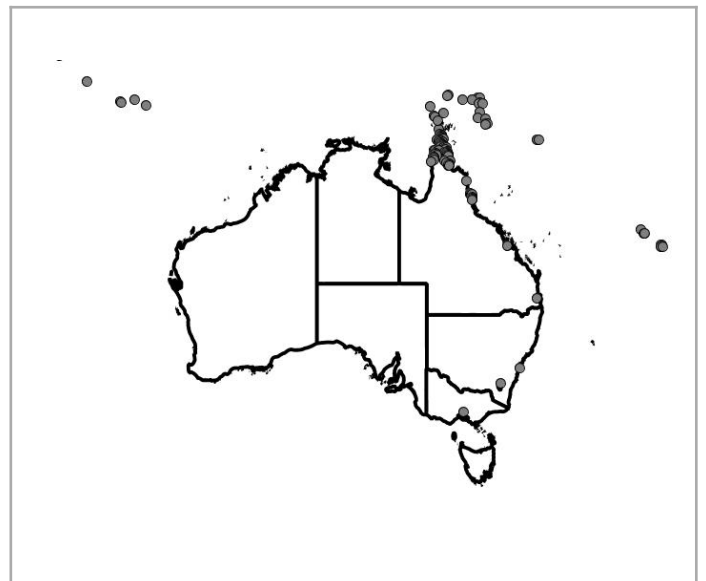
- Stanley, T.D. in George, A.S. (ed.) (1982), *Nepenthaceae. Flora of Australia* 8

T.D. Stanley

Dioecious shrubs or vines often climbing by their leaves. Leaves alternate, sessile or petiolate; adult leaves consisting of a petiole, an expanded lamina and a coiled zone (tendrill) terminated by a pendent, often highly coloured urceolate to cylindrical pitcher (ascidium) with a recurved fluted rim and a lid (operculum). Inflorescence a raceme or panicle, terminal but later appearing lateral by development of a branch in uppermost leaf axil. Flowers actinomorphic. Tepals 3 or 4 in two whorls, usually distinct, nectariferous. Male flowers: stamens 2–24; filaments connate into a column; anthers crowded, bilocular, opening lengthwise. Female flowers: carpels 3 or 4; ovary superior, 3- or 4-locular; placentation axile; ovules many; style 1, stout or obsolete; stigma discoid. Fruit an elongated leathery capsule, loculicidally dehiscent. Seeds numerous, filiform; endosperm fleshy; embryo straight, cylindrical.

The greater proportion of *Nepenthes*....

Distribution: 176 species (Stevens 2001 onwards) extending from Madagascar, Indo-malaysia and southern China to northern Australia and New Caledonia; 4 species in NE Australia (Australian Plant Census, accessed January 2020).



Common Name: Pitcher Plants.

Taxonomic Notes: Since publication of the *Flora of Australia* Nepenthaceae treatment (Stanley 1982) additional species have been recognised in Australia: *Nepenthes tenax* C. Clarke & R. Kruger (2006); *Nepenthes parvula* Gary W. Wilson & S. Venter (2016), and *Nepenthes rowaniae* F. M. Bailey (treated as a synonym of *N. mirabilis* in Stanley 1982). These taxa require assessment for inclusion in an updated Flora treatment (editorial note, 16 April 2020).

- Bibliography:** Bentham, G. (1873). Nepenthaceæ, *Flora Australiensis* 6: 40–41. (L. Reeve & Co.: London).
- Cheek, M. & Jebb, M. (2001). Nepenthaceae Dumont, in Nooteboom, H.P. (ed.), *Flora Malesiana* 15: 1–157. (Nationaal Herbarium Nederland: Leiden).
- Clarke, C. & Kruger, R. (2006). *Nepenthes tenax* C. Clarke & R. Kruger (Nepenthaceae), a new species from Cape York Peninsula, Queensland. *Austrobaileya* 7(2): 319–324.
- Clarke, C., Schlauer, J., Moran, J. & Robinson, A. (2017). Systematics and evolution of *Nepenthes*, in Ellison, A.M. & Adamec, L. (eds), *Carnivorous Plants. Physiology, Ecology, and Evolution*. (Oxford University Press: Oxford).
- Jebb, M.H.P. & Cheek, M. (1997). A skeletal revision on *Nepenthes*. *Blumea* 42: 1–106.
- Kubitzki, K. (2002). Nepenthaceae, in Kubitzki, K. & Bayer, C. (eds), *The Families and Genera of Vascular Plants* 5: 320–324. (Springer-Verlag: Berlin).
- Lloyd, F.E. (1942). *Nepenthes*, in *The Carnivorous Plants*, pp. 51–80. (Chronica Botanica Company: Waltham, Mass., U.S.A.).
- Lowrie, A. (2014). *Carnivorous Plants of Australia Magnum Opus* Volumes 1–3. (Redfern Natural History Productions: Poole, U.K.).
- Robinson, A.S., Golos, M.R., Barer, M., Sano, Y., Forgie, J.J., Garrido, D., Gorman, C.N., Luick, A.O., McIntosh, N.W., McPherson, S.R., Palena, G.J., Panco, I., Quinn, B.R. & Shea, J. (2019). Revisions in *Nepenthes* following explorations of the Kemul Massif and the surrounding region in north-central Kalimantan, Borneo. *Phytotaxa* 392(2): 97–126.
- Stanley, T.D. (1982). Nepenthaceae, in George, A.S. et al. (eds), *Flora of Australia* 8: 7–8. (Australian Government Publishing Service: Canberra).
- Stevens, P.F. (2001 onwards). *Angiosperm Phylogeny Website*. Version 14, July 2017 [and more or less continuously updated since] <http://www.mobot.org/MOBOT/research/APweb/welcome.html> [accessed 12 August 2019]
- Wilson, G.W. & Venter, S. (2016). *Nepenthes parvula* (Nepenthaceae), a new species from Cape York, Queensland, Australia. *Phytotaxa* 277(2): 199–204.

Source: Revised edition published 16 April 2020. Adapted from T.D. Stanley, Nepenthaceae, *Flora of Australia* 8: 7–8 (1982). Updated by P.G. Kodela (20 January 2020, 16 April 2020).

Images



Fig. 1: 'MEL 2469200: *Nepenthes vieillardii*' by Royal Botanic Gardens Victoria (© Royal Botanic Gardens Board)



Fig. 2: '*Nepenthes mirabilis*' by Royal Botanic Gardens Victoria (© Royal Botanic Gardens Board)
 (cc) BY



Fig. 3: '*Nepenthes mirabilis*' by Royal Botanic Gardens Victoria (© Royal Botanic Gardens Board)
 (cc) BY



Fig. 4: '*Nepenthes mirabilis*' by Royal Botanic Gardens Victoria (© Royal Botanic Gardens Board)
 (cc) BY



Fig. 5: 'Beccari, O. 187 (MEL 2450623), Type of *Nepenthes singalana* Becc.' by Royal Botanic Gardens Victoria (© Royal Botanic Gardens Board)



Fig. 6: '*Nepenthes mirabilis*' by Royal Botanic Gardens Victoria (© Royal Botanic Gardens Board)
 (cc) BY



Fig. 7: 'MEL 2469201: *Nepenthes vieillardii*' by Royal Botanic Gardens Victoria (© Royal Botanic Gardens Board)



Fig. 8: '*Nepenthes mirabilis*' by Fagg, M. (© Fagg, M.)
 (cc) BY



Fig. 9: '*Nepenthes mirabilis*' by Fagg, M. (© Australian National Botanic Gardens)
 (cc) BY



Fig. 10: '*Nepenthes*' by Fagg, M. (© Australian National Botanic Gardens)
 (cc) BY



Fig. 11: '*Nepenthes mirabilis*' by Fagg, M. (© Australian National Botanic Gardens)
 (cc) BY



Fig. 12: '*Nepenthes*' by Fagg, M. (© Fagg, M.)
 (cc) BY



Fig. 13: '*Nepenthes mirabilis*' by Fagg, M. (© Australian National Botanic Gardens)



Fig. 14: '*Nepenthes*' by Fagg, M. (© Director of National Parks)

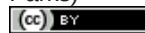


Fig. 15: '*Nepenthes*' by Fagg, M. (© Australian National Botanic Gardens)

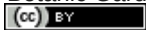


Fig. 16: '*Nepenthes mirabilis*' by Unknown (© Centre for National Biodiversity Research)



Fig. 17: '*Nepenthes*' by Fagg, M. (© Director of National Parks)

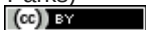


Fig. 18: '*Nepenthes mirabilis*' by Fagg, M. (© Fagg, M.)



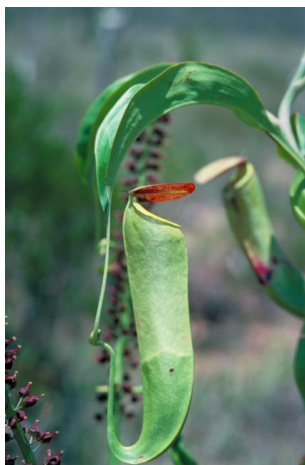


Fig. 19: '*Nepenthes mirabilis*' by Unknown (© Centre for National Biodiversity Research)

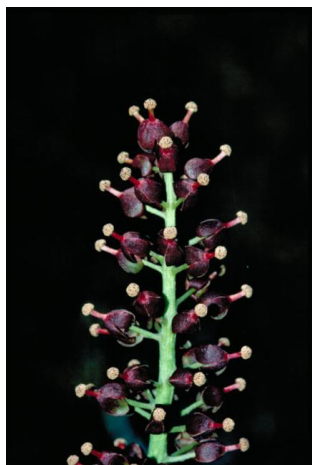


Fig. 20: '*Nepenthes mirabilis*' by Unknown (© Australian National Botanic Gardens)



Flora of Australia: vascular plants *Nepenthes* key

From: **Clarke, C. & Kruger, R.** (2006). *Nepenthes tenax* C. Clarke & R. Kruger (Nepenthaceae), a new species from Cape York Peninsula, Queensland. *Austrobaileya* 7(2): 319-324.

- | | | |
|---|--|---------------------|
| 1 | Upper pitchers with a horizontal ridge (or "hip") immediately beneath the peristome; margins of leaf blade very gradually tapered towards the apex, which is obtuse and slightly peltate | Nepenthes rowaniae |
| 1 | Upper pitchers with hip lacking entirely or present in the lower quarter; margins of leaf blade generally contracted abruptly towards the apex | 2 |
| 2 | Leaf blades with a distinct petiole at the base; upper pitchers bulbous or narrowly ovoid below the hip, stems climbing to 3 m, supported by surrounding vegetation | Nepenthes mirabilis |
| 2 | Leaf blades sub-petiolate at the base, upper pitchers infundibular throughout, stems free-standing to 0.5 (-1) m | Nepenthes tenax |

Acknowledgements

Editor

P.G. Kodela

