



Flora of Australia

Corunastylis gracillima

Author: D.L. Jones

Cite this profile as: D.L. Jones. *Corunastylis gracillima*, in Z.P. Groeneveld (ed.), Flora of Australia. Australian Biological Resources Study, Department of Agriculture, Water and the Environment: Canberra.
<https://profiles.ala.org.au/opus/foa/profile/Corunastylis%20gracillima> [Date Accessed: 17 May 2022]

Generated on Tue May 17, 2022

Copyright

© Copyright Commonwealth of Australia, 2022

The material in this profile is protected by copyright laws and may be used as permitted under the Copyright Act 1968 or in accordance with licences granted by the copyright owner.

Your right to use images and maps or to permit others to use these is subject to the terms of the licence that the contributor of them has applied to the image or map. Information on copyright in images is set out in the Acknowledgements section and through the ALA site at <http://www.ala.org.au/faq/using-images-found-on-the-ala/>. Text used in this profile has been contributed by the editors and others identified. Unless permitted by the copyright owner, you may download or print a single copy of this material for your own information, research or study.

You may not remove any copyright or other notices appearing in this profile.

No rights are granted to the Commonwealth Coat of Arms or to any logos or trade marks.

Please contact ALA at support@ala.org.au if you believe material in this profile infringes any rights or breaches any contract or licence obligations.

License

All material CC-BY unless otherwise stated.

ISSN: 22077820

Profile Updated: Mon Jan 31, 2022 5:29 PM AEDT

Version: 1

Cite this profile as: D.L. Jones. *Corunastylis gracillima*, in Z.P. Groeneveld (ed.), *Flora of Australia*. Australian Biological Resources Study, Department of Agriculture, Water and the Environment: Canberra.

<https://profiles.ala.org.au/opus/foa/profile/Corunastylis%20gracillima> [Date Accessed: 17 May 2022]

Profile permalink:

<https://profiles.ala.org.au/opus/foa/profile/d6059491-b084-42f3-ac42-fd3fde905a68>



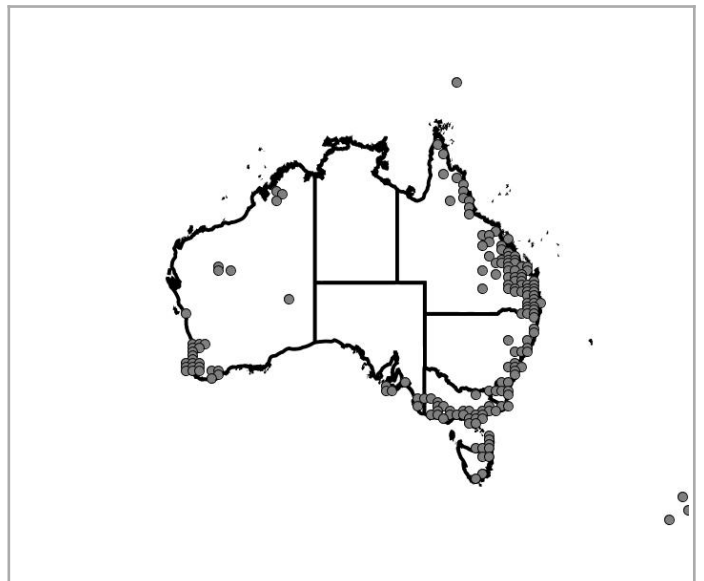
Corunastylis gracillima

- Jones, D.L. (January 2021), *Native Orchids of Australia* Edn. 3 : 380

D.L. Jones

Leaf 100–200 mm long, very thin; free part 10–20 mm long, ending below flowers. Spike 20–50 mm long, 20–50-flowered. Flowers well spaced, porrect, 4.5–5 × 3–3.5 mm, green and purplish red. Dorsal sepal 2.4–3 × 2 mm, greenish with reddish or purplish marginal bands and an obscure central stripe; margins glabrous; apex shortly pointed. Lateral sepals sharply recurved above base, 3–3.5 × 1 mm, base not humped; apex shortly pointed, without a gland. Petals widely spreading, 2–2.2 × 0.7 mm; margins slightly irregular; apex acuminate. Labellum stiffly hinged, oblong to elliptic, 2.3–2.6 × 1–1.3 mm, dark red to reddish black, fleshy; margins entire or slightly irregular; apex acuminate. Callus tapered, fleshy, reddish black, extending nearly to labellum apex.

Distribution: Qld (Mundubbera to Wyberba); 100–700 m altitude.



Etymology: From the Latin *gracilis* (thin, slender) and *-illimus* (superlative, very), in reference to the slender growth habit and thin lateral sepals.

Common Name: Slender Midge Orchid.

Diagnostic Features: Flowers small, porrect, green and purplish red; margins of sepals and petals glabrous; lateral sepals thin, not humped at base, sharply recurved; petal margins irregular, apex with long point; labellum oblong to elliptic, with entire or slightly irregular margins.

Similar species: *Corunastylis rufa* has strongly nodding uniformly bright red, reddish or pinkish flowers, lateral sepals strongly humped at base and obovate labellum usually with smooth margins.

Phenology: Flowers March–May.

Biostatus: Native.

Habitat: Locally common; growing among shrubs, tussocks and rocks in open forest in sands and clay loam and in thin soil and moss carpets over rock sheets, particularly granite.

Nomenclature and Typification: *Corunastylis gracillima* D.L.Jones, *A Complete Guide to Native Orchids of Australia* 3rd edn: 380 (2021), *nom. inval.*, as a type is not indicated as required under ICN Art. 40.1 (Shenzhen Code, 2018) - APNI, accessed May 2022.

Taxonomic Notes: First named in 2020 based on specimens collected by David Jones and Lex Barton in 1987 from Wyberba, Darling Downs District, SE Qld.

Illustrations: D.L. Jones, *A Complete Guide to Native Orchids of Australia* 3rd edn: 378 (2021).

Bibliography: Jones, D.L. (2021). *A Complete Guide to Native Orchids of Australia* 3rd edn. (Reed New Holland: Sydney).

Source: This profile has been adapted from *A Complete Guide to Native Orchids of Australia* 3rd edn (2021) by D.L. Jones, with support from the Australian Orchid Foundation.

Images



Fig. 1: '*Selaginella gracillima*' by Hill, R. (© Director of National Parks)

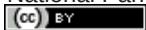


Fig. 2: '*Selaginella gracillima*' by Hill, R. (© Australian National Botanic Gardens)



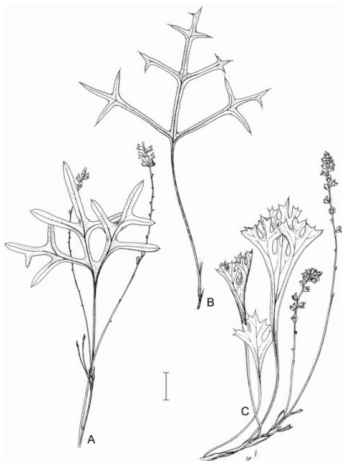


Fig. 3: '*Synaphea gracillima*' by M.Pieroni. (© Commonwealth of Australia)

(cc) BY



Fig. 4: '*Caladenia carnea* var. *gracillima*' by Fagg, M. (© Fagg, M.)

(cc) BY



Fig. 5: '*Aristida gracilipes*' by Royal Botanic Gardens Victoria (© Royal Botanic Gardens Board)

(cc) BY



Fig. 6: '*Aristida gracilipes*' by Royal Botanic Gardens Victoria (© Royal Botanic Gardens Board)

(cc) BY



Fig. 7: '*Xyris gracillima*' by Royal Botanic Gardens Victoria (© Royal Botanic Gardens Board)

(cc) BY



Fig. 8: '*Aotus gracillima*' by Royal Botanic Gardens Victoria (© Royal Botanic Gardens Board)

(cc) BY



Fig. 9: '*Aotus gracillima*' by Royal Botanic Gardens Victoria (© Royal Botanic Gardens Board)

(cc) BY



Fig. 10: '*Cladophora albida*' by Royal Botanic Gardens Victoria (© Royal Botanic Gardens Board)

(cc) BY

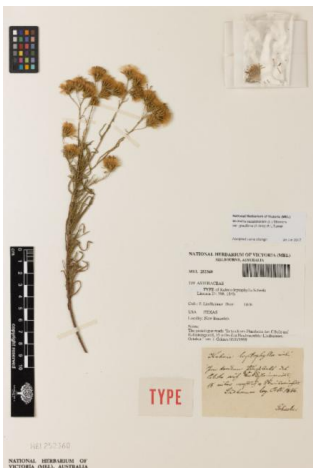


Fig. 11: '*Brickellia eupatorioides* var. *gracillima*' by Royal Botanic Gardens Victoria (© Royal Botanic Gardens Board)

(cc) BY



Fig. 12: '*Aotus gracillima*' by Royal Botanic Gardens Victoria (© Royal Botanic Gardens Board)

(cc) BY



Fig. 13: '*Aotus gracillima*' by Royal Botanic Gardens Victoria (© Royal Botanic Gardens Board)

(cc) BY



Fig. 14: '*Selaginella gracillima*' by Royal Botanic Gardens Victoria (© Royal Botanic Gardens Board)

(cc) BY



Fig. 15: '*Aotus gracillima*' by Royal Botanic Gardens Victoria (© Royal Botanic Gardens Board)

(cc) BY



Fig. 16: '*Jacksonia gracillima*' by Thiele, K.R. (© Thiele, K.R.)

(cc) BY



Fig. 17: '*Selaginella gracillima*' by Royal Botanic Gardens Victoria (© Royal Botanic Gardens Board)

(cc) BY



Fig. 18: '*Eremophila gracillima*' by Royal Botanic Gardens Victoria (© Royal Botanic Gardens Board)

(cc) BY



Fig. 19: '*Ottochloa gracillima*' by Royal Botanic Gardens Victoria (© Royal Botanic Gardens Board)

(cc) BY

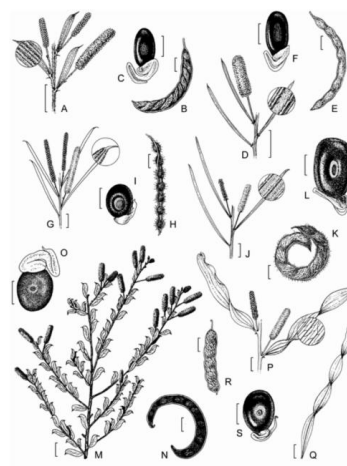


Fig. 20: '*Acacia gracillima*' by A-L, P-S M.Pieroni. M-O B.Maslin. (© Commonwealth of Australia)

(cc) BY

Acknowledgements

Editor

Z.P. Groeneveld

